

# Public Health Certificate

A Full-time, One-year Professional Certificate Program –Part-time Program Also Available (18 credit hours)

## PROGRAM DESCRIPTION

The Public Health Certificate is designed to offer working professionals, current health professions students, and other traditional and non-traditional students a way to advance their public health training. The certificate is affiliated with the Master of Public Health (MPH) degree and consists of a set of courses that will provide students with a foundation in the core principles of public health. In this certificate program, students will gain a foundation in the core public health courses, including epidemiology, biostatistics, health policy and administration, social and behavioral aspects of public health, and health communication.

## ADMISSIONS REQUIREMENTS

- Graduate Application for Admission.
- Unofficial transcripts from all institutions of higher education previously attended
- Completion of a bachelor's degree from an accredited institution (3.0 minimum GPA).
- One letter of reference from academic advisors, professors, supervisors, mentors, or person familiar with the applicant's academic and/or professional ability. A faculty letter of recommendation is strongly encouraged.
- Resume/C.V.
- A 250-word letter of interest, stating the applicant's reasons for wanting the certificate and their relevant work experience.
- Language Proficiency Requirement must be met. Submission of TOEFL, IELTS, PTE, or Duolingo English Test may be required. See our policy for full details: <https://www.su.edu/admissions/international-students>

Upload all documents to your [Shenandoah Admissions Self-Service Center](#)

## CERTIFICATE REQUIREMENTS

Course	Title	Credits
PH 501	History & Philosophy of Public Health	3
PH 505	Social & Behavioral Aspects of Public Health	3
PH 510	Biostatistics	3
PH 515	Principles of Epidemiology	3
PH 520	Health Policy & Management	3
PH 535	Health Communication	3
<b>Total</b>		<b>18</b>

Students wishing to transfer to the Master of Public Health (MPH) Degree program may apply to do so after successfully completing at least 3 courses. Up to 18 credits of coursework may be applied to the MPH program once a student is admitted.

## ADMISSION & APPLICATION

### Admissions

START TERM: Fall and Spring

APPLICATION DEADLINE:

**Fall: August 1**

**Spring: December 3**

*Completed applications reviewed regularly*

MINIMUM GPA: 3.0 cumulative

PREREQUISITES: Bachelor's Degree or

higher

GRE: Not Required

### Applying to Shenandoah

Begin the online application process by going to [www.su.edu/phapp](http://www.su.edu/phapp).

### Foreign Transcripts

International transcript evaluation by an accredited agency is an admission requirement. Approved services are listed at [www.naces.org](http://www.naces.org) and <http://aice-eval.org/>.

### Contact Us

Dr. Michelle Gamber

Director of Graduate Public Health

Programs

[mgamber@su.edu](mailto:mgamber@su.edu) | (540) 665-5560

Office of Graduate Admissions

1460 University Drive

Winchester, VA 22601

[sugradadmissions@su.edu](mailto:sugradadmissions@su.edu)

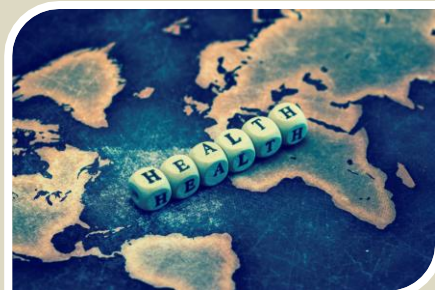
(540) 665-4581



**Dr. Michelle Gamber,**  
Director of Graduate Public Health Programs



**Health Professions Building**  
1775 N. Sector Dr.  
Winchester, VA 22601



## **DIVISION OF PUBLIC HEALTH**

Shenandoah University's Division of Public Health (SUPH) offers an innovative online graduate Public Health Certificate program. At Shenandoah University, the online program format allows students the flexibility to earn this certificate from any location and engage with students and faculty who have a shared drive and passion for making a difference.

## **PUBLIC HEALTH CURRICULUM**

Shenandoah University's Public Health Certificate program is delivered entirely online. Students will attend classes and learn in an online environment that will be engaging and interactive. The online learning model requires students to be highly motivated, active, independent, and self-directed learners. Students are expected to think critically and act professionally in the application of course materials to real-world health problems.

This program will provide students with an opportunity to analyze current health problems from a variety of interdisciplinary and interprofessional viewpoints. The program provides coursework opportunities for students to obtain broad knowledge and basic skills in public health. The Public Health Certificate program provides a foundation in public health training, and earned certificate credit may be used towards completion of the MPH degree at Shenandoah University.

## **CAREER OUTLOOK**

Public health is a dynamic, diverse, and growing field where practitioners work from a myriad of disciplines and approaches to improve the health and lives of people. Practitioners work together to address the root causes of complex and multi-faceted health problems in order to develop practical, sustainable, and cost-effective solutions.

A career in public health allows people to contribute to preventing injury and illness across populations at many different levels, with the potential to reach thousands of people at one time. The variety of jobs available make public health a good fit for those who seek to serve others and make an impact.

The current employment outlook for public health professionals is strong and growing annually. The demand for public health professionals continues to rise in response to increasing domestic and international health concerns such as: growing problems with chronic diseases, potential pandemics, air and water quality issues, workplace safety, and more. As these health concerns continue to impact the health of our populations, the need for a trained public health force to respond to these issues persists.

Public health offers a wide range of career opportunities, and annual wages for public health jobs range from \$35,000 - \$130,000.